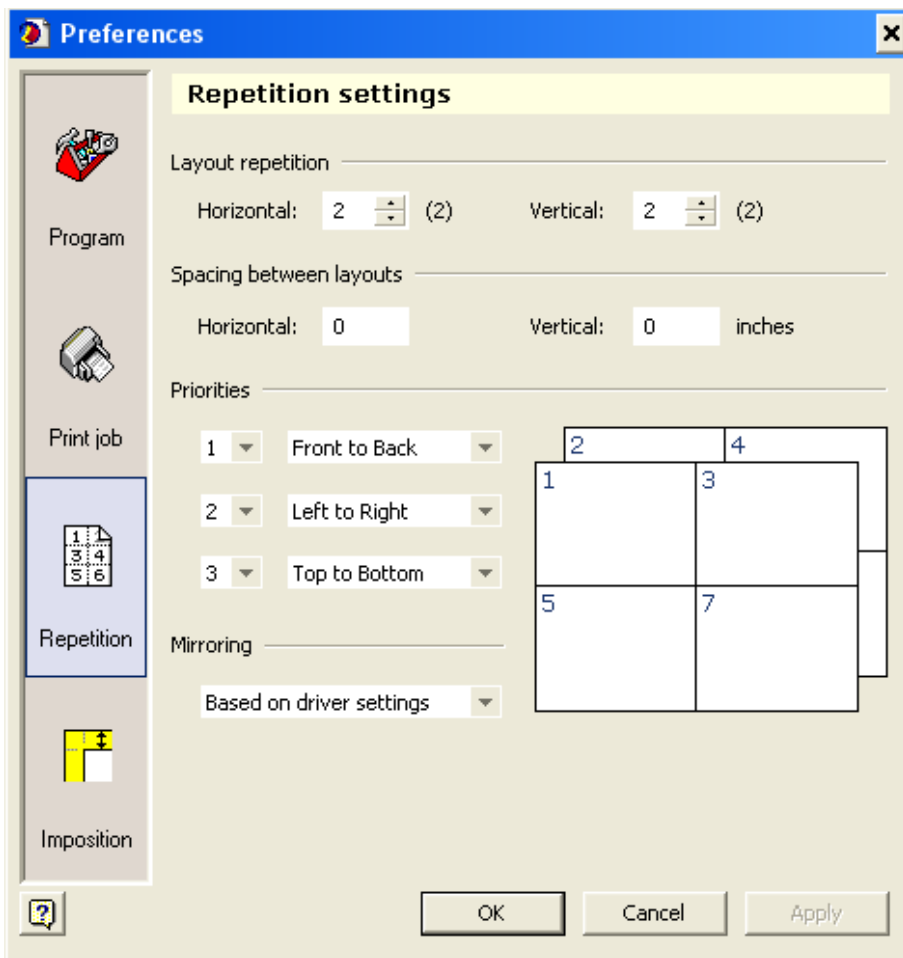
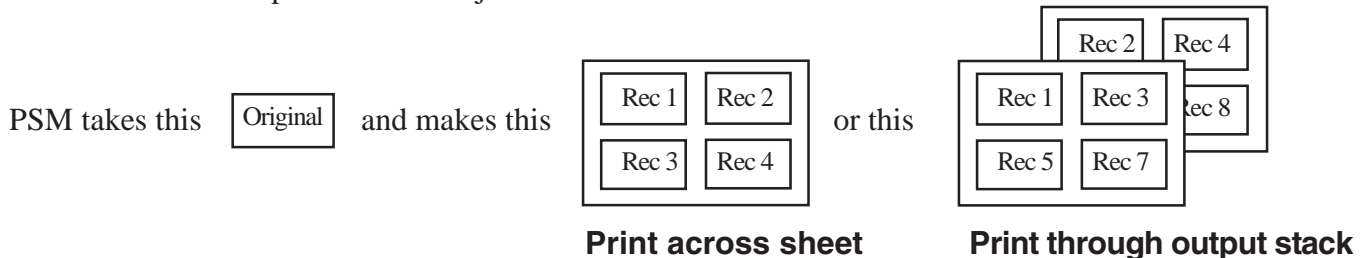




PrintShop Mail Layout Repetition Setup

PrintShop Mail (PSM) has the ability to multiply a 1-up layout to as many repetitions that will fit on the output page. You can also control the output order of the job.



Get to the Layout Repetition window
 Mac: **PrintShop Mail > Preferences > Repetition**
 Win: **Edit > Preferences > Repetition**

Layout Repetition: specifies the number of Horizontal and Vertical layouts

Spacing between layouts: specifies the Horizontal and Vertical spacing between each layout

Priorities: specifies the position and the order of the output on the page

Print order through output stack (Z-sort)
 Priorities set to 1,2,3 will print the records vertically through the output stack

Print order horizontally (across the sheet)
 Priorities set to 3,2,1 will print the records from left to right horizontally across the output page

Mirroring/Duplex Mode: book matches 2-sided documents

- Based on Driver Settings
- Flip on Long Edge
- Simplex

You can pre-flight (verify) your document. This process checks for possible errors by doing an internal merge of the job.

Preflight Document
 Mac/Win: **Layout > Verify Document**

The following checks are done:

- Verifies location of variable image and template files
- Verifies variables are placed within the layout
- Verifies layout is within the printer driver's "Printable Area"
- Checks for text overflow in text boxes
- Checks for syntax errors in the Expression formulas

Itemized errors can be seen via the **Warnings** window (**Window > Warnings**)