

PrintShop Web **What's NEW in PrintShop Web Version 2.2!**

VERSION 2.2

PrintShop Web **Great new features for a streamlined ordering experience and even more flexibility!**

Online payments features

▶ New shopping cart function

The shopping cart workflow allows the print buyer to collect multiple documents before placing the final order.

▶ Enhanced price calculation features

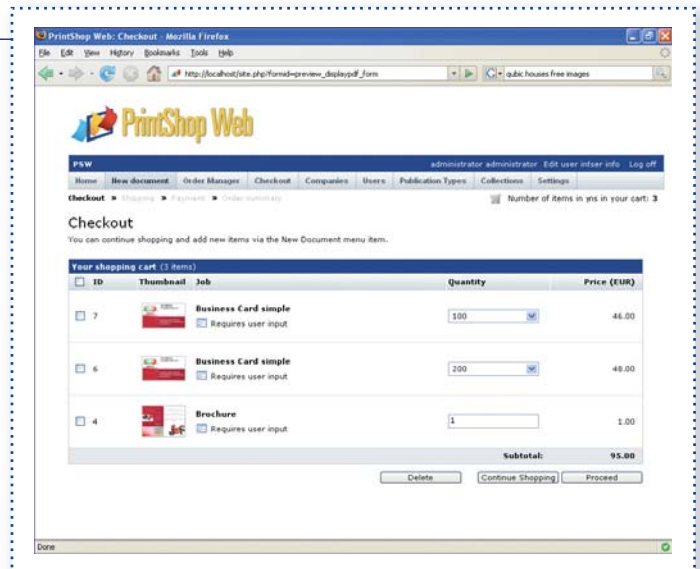
To allow for an efficient management of the orders and streamline the payment process, PrintShop Web Version 2.2 features enhanced price calculation functions such as:

- A flexible tax rate mechanism able to work with worldwide tax rate systems.
- Shipping charges functions.
- Order date restrictions and dynamic rush rate handling (holidays, working days etc).

These features allow the PrintShop Web administrator to configure the correct price for documents taking into account order dates, shipping charges and local taxes. The correct price of individual orders is then calculated and all costs are summarized at the checkout stage.

▶ Purchasing workflow modifications

In most organizations the workflow for ordering printed material requires approval by authorized employees. In short, users with a basic role are limited to creating orders but cannot approve them or proceed to checkout. This slightly differs from a normal ecommerce web site where the end-user can usually shop for products and autonomously proceed with checkout. With PrintShop Web 2.2, all orders within a single organization can be compiled in an "Order" folder, until they are approved by an authorized user before being processed by the print provider. Restricted users are therefore allowed to order the required documents but the approval of an authorized user is required to proceed with the final order.



User input types

In addition to the currently supported field types for user input data fields such as text fields, image upload and pull down menus, the following user input field types have been added to PrintShop Web Version 2.2:

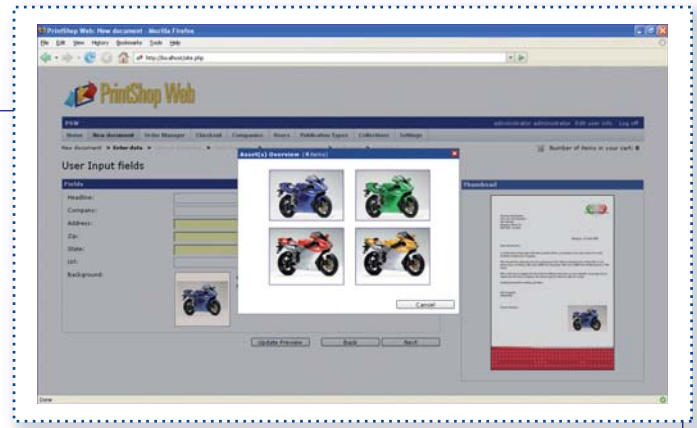
- Text field using regular expressions. In computing, a regular expression is a string that is used to describe or match a set of strings, according to certain syntax rules. "Regular expression" is often shortened to regex. They can be used to check the syntax of telephone numbers and postal codes. It can also be used to limit the input to characters or numbers only.
- Checkboxes.
- Rich Text Editing fields allowing the user to apply basic formatting to the manually entered data such as bold style, alignment, list and colors.



Image collections

This new feature of PrintShop Web Version 2.2 allows the customer to select an image from a predefined list of images such as stock images or company logos and upload it to a document. Image collections are one of the new input types for user input data fields. For this the designer has to define a variable image box in the PrintShop Mail document and assign an image collection to the data field in PrintShop Web.

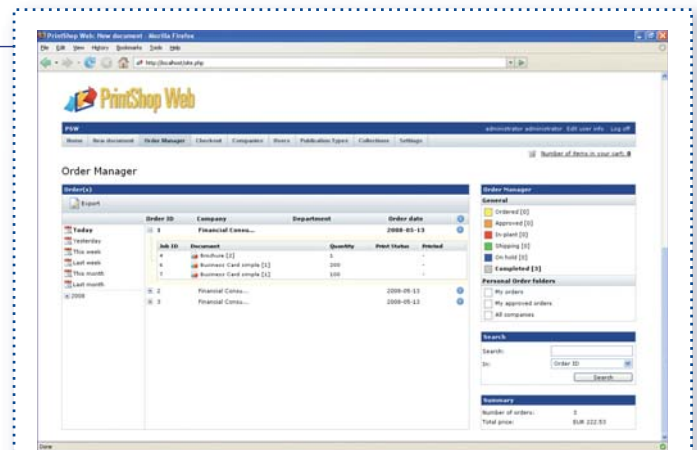
Collections are managed in a central location and can be assigned to data fields across multiple documents. Images can be uploaded using the PrintShop Web user interface.



Completed order overview enhancements

The tree view of the completed orders overview has an option to show the completed orders of the day or within a predefined period. This allows the quick retrieval of a list of orders using one of the following options:

Today	shows orders completed today.
Yesterday	shows orders completed yesterday.
This week	shows orders completed this week.
Last week	shows orders completed last week.
This month	shows orders completed this month.
Last month	shows orders completed last month.



Custom roles

In this new version, the PrintShop Web administrator can create new roles, allowing for a more custom solution meeting every organization's needs.



Thumbnail generation

For a quick preview of the document selected, PrintShop Web Version 2.2 automatically creates thumbnails for uploaded PDFs in the Publication Type section (static PDFs) and for uploaded PDF, EPS and TIFF files in other sections of the system (user upload, image collections, linked files).

PrintShop Mail 6.1 and PrintShop Server 6.1 support

This includes:

- Support for PDF as dynamic objects
- Variable/Relative Object Position (anchoring)
- Spot Color support



OBJECTIF LUNE

For more information on our line of products, visit our Web Site.

www.objectiflune.com

