



Tray Selection

Selecting trays with a NexPress device in PrintShop Mail 5.x version for Windows differs from previous versions. It directly communicates with the printer driver. This ability offers the option to use the printer specific settings, like range stapling or binding within a multi-page documents.

To print from trays with a NexPress device, be sure that the RIP and PPD version are updated. Tray selection has been tested with:

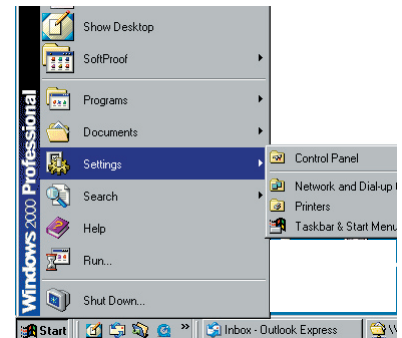
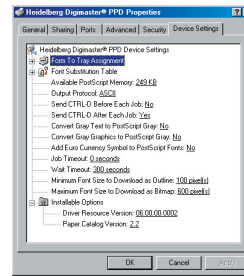
- NexPress PPD version 6
- RIP Release version 6

To enable the tray selections from PrintShop Mail you first have to check if the the paper definitions in the PPD are correct:

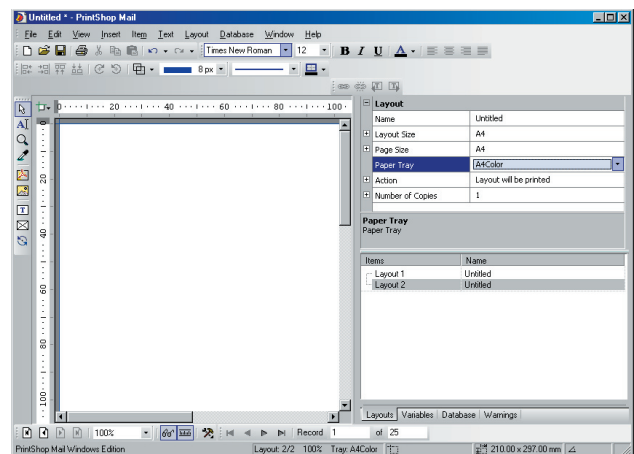
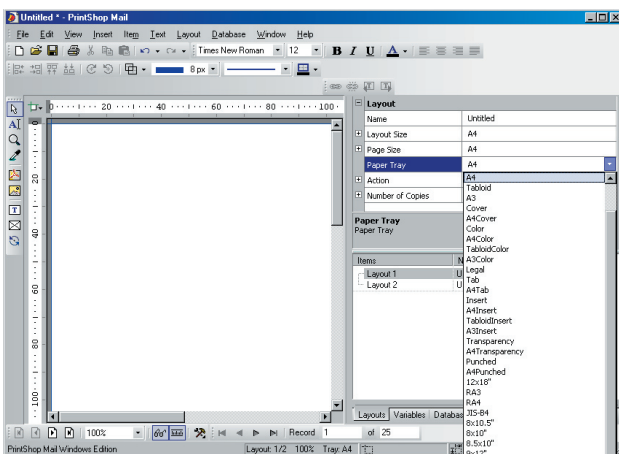
- From the Windows menu, select "Start > Settings > Printers"
- Go to the NexPress 6 PPD and change the correct settings for the paper catalog
- Press OK

Selecting trays from PrintShop Mail :

- Launch PrintShop Mail
- Insert a layout, from the PrintShop Mail menu go to "Insert Layouts" and press OK
- Select Layout 1 in the Properties panel
- Select the Paper tray, in this case we use "A4" for Layout 1
- Select Layout 2 and select the paper tray "A4 Color"



This procedure will pull the job from different trays.



Subset finishing

Subset finishing has not been tested with tray selections (see also the Customer Release Notes that come with the NexPress PPD).

For questions: support@printshopmail.com